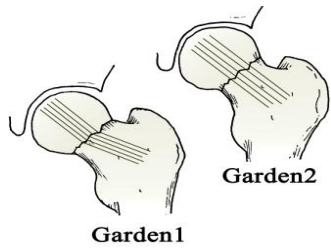


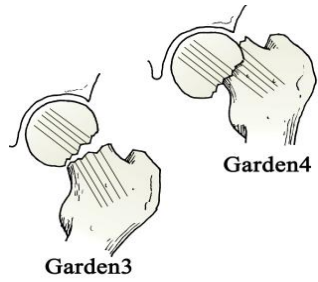
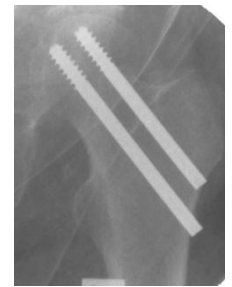
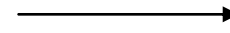
# Algorithm för val av operationsmetod vid höftfraktur.

Med inspiration från: Palm H et al. A new algorithm for hip fracture surgery. Reoperation rate reduced from 18% to 12% in 2,000 consecutive patients followed for 1 year. Acta Orthopaedica 2012; 83 (1): 26-30



## Odislocerade collum femoris frakturer

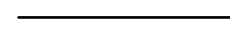
Garden I and II with  $< 20^\circ$  posterior tilt behandlas med Hansson pin eller Olmed skruvar



## Dislocerade collum frakturer

Behandling Garden I och II med  $\geq 20^\circ$  posterior tilt samt Garden III and IV

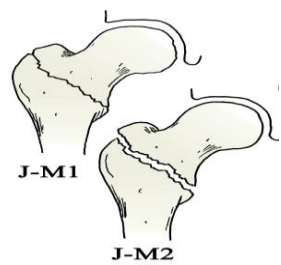
Patienter 65 år och äldre: Protes  
Patienter yngre än 65 år: Skruvfixation



## Vertikal collum femoris fraktur

## Basocervikal collum femoris fraktur

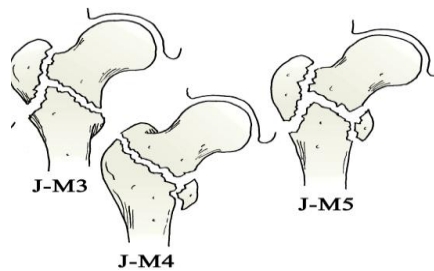
Behandling med 2- håls DHS eller Twin Hook



## Stabila pertrokantära frakturer

J-M1, 2

Två eller 4- håls DHS alt Twin Hook



## Instabila pertrochantära & Subtrochantära frakturer

J-M3, 4 & 5

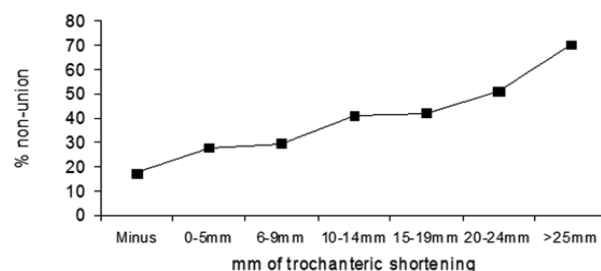
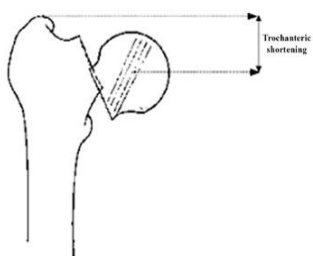
Intramedullär märkegspik: Gamma 3, oftast lång vid subtroch



Samtliga illustrationer ovan från Ortopediskt Traumakompndiet med tillåtelse av G.Sandersjö

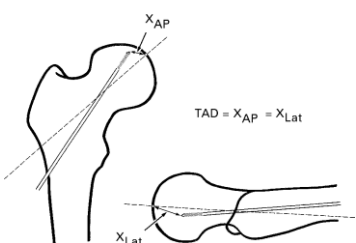
## Röntgenkontroll vid återbesök 12 veckor post OP av förskruvade collum femoris frakturer och vid collum skruvar med TAD mera än 25mm.

Martyn J. Parker, Jon Kendrew, Kurinchi Gurusamy, "Radiological predictive factors in the healing of displaced intracapsular hip fractures. A clinical study of 404 cases" Hip Int 2011; 21 (04 ): 393 - 398



"Measurement of trochanteric shortening. This is the distance in millimetres between the centre of the femoral head and a line drawn at 90 degrees to the femoral shaft that passes through the tip of the greater trochanter"

Rubio-Avila J1, Madden K, Simunovic N, Bhandari M J Orthop Sci. 2013 Jul;18(4):5928. "Tip to apex distance in femoral intertrochanteric fractures: a systematic review".



"Patients with TAD  $> 25$  mm had a significantly greater risk of cut-out than patients with TAD  $< 25$  mm. (RR = 12.71). Patients who experienced implant cut-out had significantly higher TAD scores than those who did not (mean difference = 6.54 mm)."

